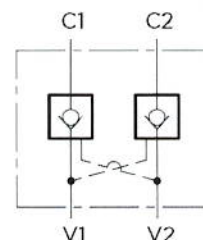
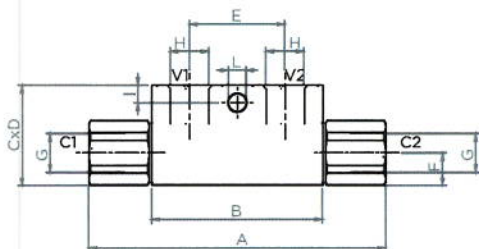
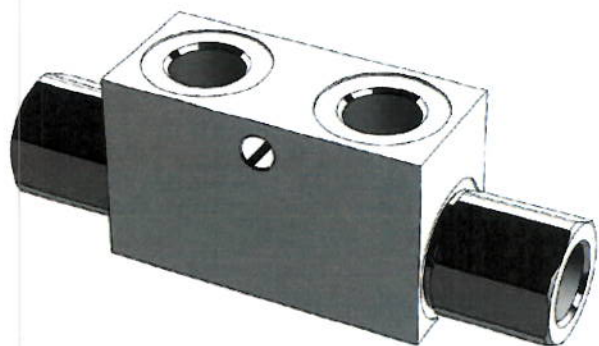


VRDP



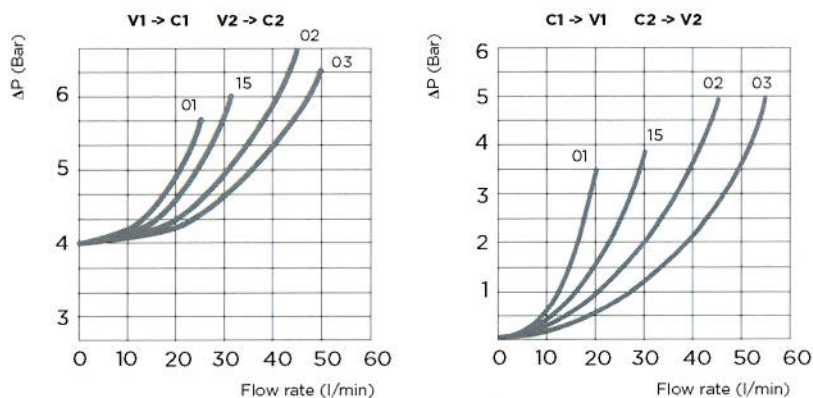
VALVOLA DI RITEGNO SEMPLICE
EFFETTO PILOTATA
DUAL PILOT OPERATED CHECK VALVE



CARATTERISTICHE - HYDRAULICS FEATURES

| Grandezza Size | 01 | 15 | 02 | 03 |
|---|-------|-------|-----|-----|
| Press. max Max pressure (bar) | 350 | 350 | 300 | 300 |
| Portata max Max flow (l/min) | 25 | 30 | 45 | 50 |
| Rapporto d'apertura Pilot ratio | 1:4,6 | 1:4,6 | 1:4 | 1:4 |
| Pressione d'apertura Cracking pressure (bar) | 4 | 4 | 4 | 4 |

PRESSIONE/PORTATA - PRESSURE/FLOW



Materiali:
Corpo in acciaio zincato,
parti interne in acciaio
trattato termicamente.
Materials:
Zinc plated steel body,
hardened steel inner parts.

DIMENSIONI E PESI - EXTERNAL DIMENSIONS AND WEIGHTS

| Dimensione Dimension | A | B | C | D | E | F | G BSPP | H BSPP | I | L | Peso Weight (Kg) |
|-------------------------|-----|----|----|----|----|----|--------|--------|----|-----|---------------------|
| 01 | 117 | 68 | 40 | 30 | 38 | 13 | 1/4 | 1/4 | 7 | 7 | 0,67 |
| 15 | 117 | 68 | 40 | 30 | 38 | 13 | 3/8 | 3/8 | 7 | 7 | 0,63 |
| 02 | 143 | 80 | 50 | 30 | 40 | 16 | 3/8 | 3/8 | 15 | 8,5 | 0,96 |
| 03 | 143 | 80 | 50 | 30 | 40 | 16 | 1/2 | 1/2 | 15 | 8,5 | 0,89 |

CODICE ORDINAZIONE - ORDERING CODE

| | | | | |
|-------------|----------|---------------------------|----------|-----------------------------|
| VRDP | - | | - | ** |
| | | GRANDEZZA SIZE | | VARIANTE VARIANT |
| 01 | 1/4 BSPP | 02 | 3/8 BSPP | 00 |
| 15 | 3/8 BSPP | 03 | 1/2 BSPP | No variante No variant |